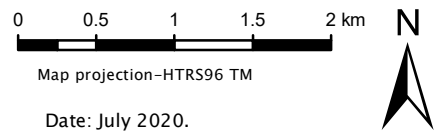


Legend

- WL gauges
- Affected buildings
- Rivers
- Flood Zone extent (AFP)



DATA SOURCE:
Hrvatske vode
Državna geodetska uprava
Other Institutions



Contractor:
Computer Classroom KU217 Limited,
Ground Floor 8-9, Marino Mart Fairview Clontarf Dublin 3,
D03 P590 Dublin, Irska

FEM PARAMETERS – RIVER SAVA

AFPO2

100-year return period

HYDROLOGICAL PARAMETERS

- Design flows $Q_{100} = 3134 [m^3/s]$
 $Q_{bankfull} = 2108 [m^3/s]$
- Peak reduction

$\Delta Q [m^3/s]$	$\Delta Q_{rel} [%]$	FEM Class
6.30	0.61	1

• Flood wave translation

$\Delta t [h]$	FEM Class
4.00	3

HYDRAULIC PARAMETERS

- Water level
- | $\Delta h [m]$ | FEM Class |
|----------------|-----------|
| 1.53 | 5 |
- Flow velocity
- | $\Delta v [m/s]$ | FEM Class |
|------------------|-----------|
| 0.03 | 1 |
- Shear stress
- | $\Delta \tau [N/m^2]$ | FEM Class |
|-----------------------|-----------|
| 0.35 | 1 |

ECOLOGICAL PARAMETERS

- Connectivity of floodplain water bodies
- | Historic Water Bodies | FEM Class |
|---|-----------|
| 4 - FP Exist, Disconnected
$Q=990m^3/s < Q_{bankfull}$ | 1 |
- Existence of protected species and habitats
- | Protected species | FEM Class |
|-------------------|-----------|
| 85 species | 5 |
- | Protected habitats | FEM Class |
|--------------------|-----------|
| 21% habitats | 1 |
- Ecological water status
- | Status | No | FEM Class |
|----------------------|----|-----------|
| Status 1 - Very poor | 0 | 5 |
| Status 2 - Poor | 0 | |
| Status 3 - Moderate | 0 | |
| Status 4 - Good | S | |
| Status 5 - Very Good | 0 | |
- Note:*
S = Sava
(main watercourse)

HYDRAULIC PARAMETERS

- Land use
- | Value | FEM Class |
|-------|-----------|
| 4.16 | 5 |
- Potentially affected buildings
- | No houses / km ² | FEM Class |
|-----------------------------|-----------|
| 0.29 | 5 |

Need for preservation: YES

RESTORATION PRIORITY Low