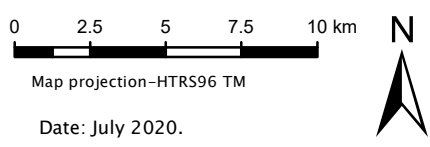


Legend

- WL gauges
- Affected buildings
- Rivers
- Flood Zone extent (AFP)



DATA SOURCE:
Hrvatske vode
Državna geodetska uprava
Other Institutions



Contractor:
Computer Classroom KU217 Limited,
Ground Floor 8-9, Marino Mart Fairview Clontarf Dublin 3,
D03 P590 Dublin, Irska

FEM PARAMETERS – RIVER SAVA

AFP01 – 1

100-year return period

HYDROLOGICAL PARAMETERS

- Design flows $Q_{100} = 3489 \text{ [m}^3\text{/s]}$
 $Q_{\text{bankfull}} = 1733 \text{ [m}^3\text{/s]}$

- Peak reduction

$\Delta Q \text{ [m}^3\text{/s]}$	$\Delta Q_{\text{rel}} \text{ [%]}$	FEM Class
1398.77	79.67	5

- Flood wave translation

$\Delta t \text{ [h]}$	FEM Class
2.00	3

HYDRAULIC PARAMETERS

- Water level

$\Delta h \text{ [m]}$	FEM Class
4.43	5

- Flow velocity

$\Delta v \text{ [m/s]}$	FEM Class
0.30	5

- Shear stress

$\Delta \tau \text{ [N/m}^2\text{]}$	FEM Class
3.63	5

ECOLOGICAL PARAMETERS

- Connectivity of floodplain water bodies

Historic Water Bodies	FEM Class
4 - FP Exist, Disconnected $Q=2714\text{m}^3\text{/s} > Q_{\text{bankfull}}$	1

- Existence of protected species and habitats

Protected species	FEM Class
162 species	5

Protected habitats	FEM Class
89% habitats	5

- Ecological water status

Status	No	FEM Class
Status 1 - Very poor	22	3
Status 2 - Poor	S	3
Status 3 - Moderate	8	
Status 4 - Good	15	
Status 5 - Very Good	14	

Note: S = Sava (main watercourse)

HYDRAULIC PARAMETERS

- Land use

Value	FEM Class
4.47	5

- Potentially affected buildings

No houses / km ²	FEM Class
3.57	3

Need for preservation: YES

RESTORATION PRIORITY Low